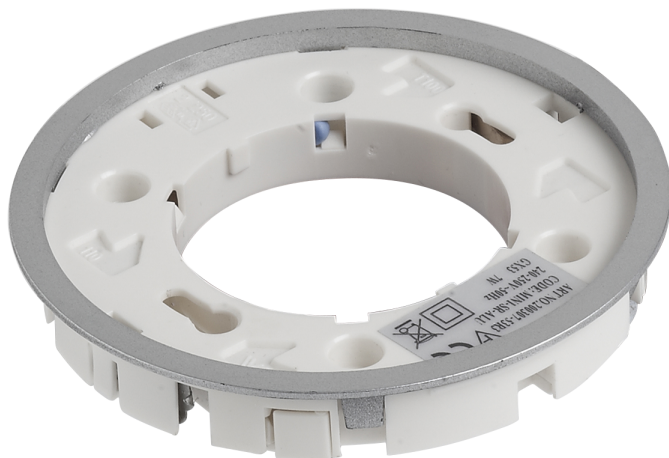


Product Data Sheet

Semi recessed straight GX53 fitting bare end

Part No: **MINI-SR-ALU**

- Lamp not included
- 1.5m bare ended lead or with mini plug





Technical Specification

| | |
|-----------------------------|--------------------|
| Part No | MINI-SR-ALU |
| Finish | Satin Silver |
| Voltage | 240 |
| Lamp Holder | GX53 |
| Lamp Included | N |
| Connector Type | Bare End |
| Depth | 13 |
| Diameter | 85 |
| Cut Out | 78 |
| Class 1 or 2 or 3 | II |
| Material / Made From | Plastic |
| EAN | 5055530801073 |
| Price per | each |
| Unit of sale | 1 |
| Notes | |
| Price | each |