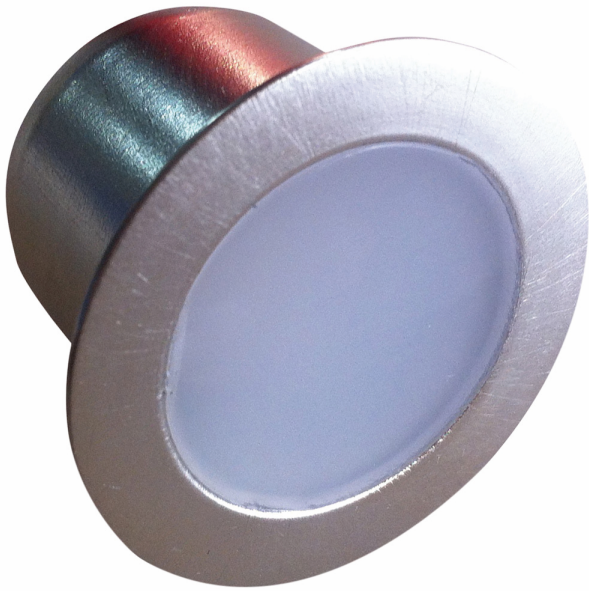


Product Data Sheet

LED plinth round single light - 6000k

Part No: **PL1RDW**

- Single light additional head for PLRND kit
- Plug & socket system to daisy chain light fittings



Technical Specification

Part No	PL1RDW
CCT	6000
Colour Temperature	Cool White
Finish	Satin Silver
Voltage	240
Wattage	0.5
CRI	80
Dimmable	N

Lamp Holder	Integrated LED
Depth	25
Diameter	35
Cut Out	25
Class 1 or 2 or 3	II
Material / Made From	Aluminium
EAN	5055530805996
Notes	
Unit of sale	1
Price per	each
Price	each